



SOFITEL FOSHAN
佛山罗浮宫索菲特酒店



S O F I T E L
HOTELS & RESORTS

01

HOTEL LOCATION 酒店位置

TRANSPORTATION 交通



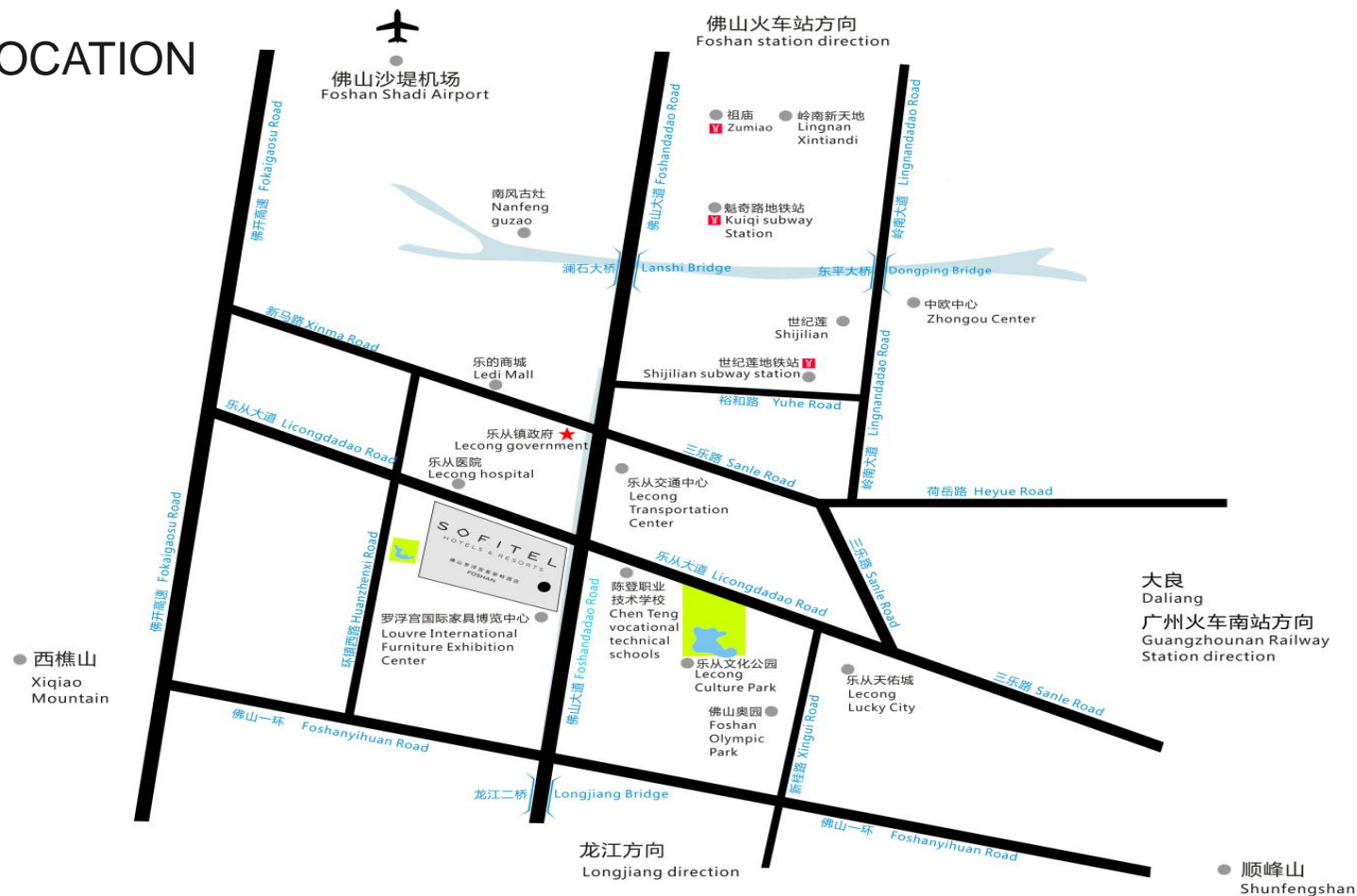
FOSHAN LOCATION

佛山位置



HOTEL LOCATION

酒店位置



CHINA FOSHAN

中国- 佛山

BY CAR TO 开车前往.

- Guangzhou 广州 – 35 km (1 hour)
- Zhongshan 中山 – 50 km (1 hour)
- Zhuhai 珠海 – 90 km (1.5 hours)
- Dongguan 东莞 – 97 km (1.5 hours)
- Shenzhen 深圳 – 120 km (2 hours)

COACH 巴士.

- To Hong Kong 香港 – 180 km (3 hours)
- To Macau 澳门 – 135 km (2 hours)

PORT 港口.

- Shunde Port 顺德港 – 39 km (2 hours ferry ride to Hong Kong 两小时船到香港)



CHINA FOSHAN

中国- 佛山

AIRPORT 机场.

- Guangzhou Baiyun International Airport 广州白云国际机场 - 50 km (1 hour)
 - Foshan Shadi Airport 佛山沙堤机场 - 16 km (22 minutes)
-

TRAIN STATION 火车 , 城轨.

- Guangzhou South Railway Station 广州南站 - 34 km (50 minutes)
- Guangzhou East Railway Station 广州东站 - 52 km (80 minutes)



02

FOSHAN INTRODUCTION 佛山简介

ATTRACTIONS, GOLF CLUBS, EXHIBITION CENTER

旅游景点，高尔夫俱乐部，会展场地



ATTRACTIONS OF FOSHAN

佛山热门旅游景点

- FOSHAN ZUMIAO TEMPLE
- FOSHAN LINGNAN TIANDI
- ANCIENT NANFENG KILN
- SHUNDE FLOWER WORLD
- XIQIAO MOUNTAIN SCENERY RESORT
- NANGUO PEACH GARDEN
- SHUNDE CHING FAI GARDEN
- SHANSHUI LOTUS WORLD
- BRUCE LEE PARADISE

(15 MINUTES DRIVE)
(15 MINUTES DRIVE)
(20 MINUTES DRIVE)
(20 MINUTES DRIVE)
(25 MINUTES DRIVE)
(40 MINUTES DRIVE)
(40 MINUTES DRIVE)
(50 MINUTES DRIVE)
(60 MINUTES DRIVE)

佛山祖庙(黄飞鸿博物馆)
佛山岭南天地
禅城南风古灶
顺德花卉世界
南海西樵山
南海南国桃园
顺德清晖园
三水荷花世界
顺德李小龙公园



UNESCO CITY OF GASTRONOMY

联合国教科文组织世界美食之都

“食在广州，厨出凤城（今佛山顺德）”顺德为粤菜的发源地。千年的真味传承中，顺德名厨辈出，将岭南文化的灵巧纤秀、兼容并蓄融入烹饪之中，烹制出了“清、鲜、爽、嫩、滑、真”的人间美味，在粤菜中独树一帜，被誉为“粤菜之源”。

The chefs in the city pay special attention to retaining the ingredients' flavors and cook with attractive colors, fragrances and tastes that can be described as "light, fresh, crispy, tender, smooth and genuine". The combination of inventive cooking methods, creative ways of presentation and outstanding flavors, make the city's cuisine truly exceptional.



EXHIBITION IN FOSHAN

佛山会展场地

LOUVRE INTERNATIONAL FURNITURE EXHIBITION CENTER

罗浮宫国际家具博览中心

Louvre Furnishings Group has become an international trading platform with “First-class environment, service and management” for Chinese furnishings companies. It was appointed by the government at all levels as the investigation organization for commerce and trade.

罗浮宫国际家具博览中心，建筑面积20万平方米，是中国家具商贸之都乐从的地标性建筑。外观及内景气势恢宏，堪称国内一流博览会的建筑物，是集国际家居购物、家居艺术鉴赏、商业考察、商务洽谈、行业盛会、休闲美食于一体的家居商业旅游名胜。



EXHIBITION IN FOSHAN

佛山会展场地

TANZHOU INTERNATIONAL EXHIBITION CENTER

广东潭洲国际会展中心

The Guangdong Tanzhou International Convention and Exhibition Center (GICEC), is the only venue of its kind in China tailored to serve the specific needs of industrial exhibitions. It is a merely 10 minutes drive from hotel.

广东（潭洲）国际会展中心选址于佛山市顺德区中德工业服务区内，是广佛都市圈的核心区域，也是顺德北部片“一心两翼”发展战略的核心所在。定位为珠三角乃至华南地区的专业产业交易会；国内外新科技、新产品、新成果展示场所；国际、国内新产业、新技术高峰论坛；中小企业服务的国际性专业展馆。



EXHIBITION IN GUANGZHOU

广州会展场地

PAZHOU INTERNATION EXHIBITION CENTER

琶洲国际会展中心

Held biannually in Guangzhou every spring and autumn, the Canton Fair is a comprehensive one with the longest history, highest level and the largest scale. It is the broadest distribution of overseas buyers and the greatest business turnover in China.

中国进出口商品交易会又称广交会，创办于1957年春季，每年春秋两季在广州举办，迄中国目前历史最久、层次最高、规模最大、商品种类最全、到会客商最多且国别地区分布最广、成交效果最好、信誉最佳的综合性国际贸易盛会。



GOLF CLUBS IN FOSHAN

佛山高尔夫球俱乐部

- ROYAL ORCHID INTERNATIONAL GOLF CLUB --16 KM
(30 MINUTES DRIVE)

佛山市顺德区北滘君兰国际高尔夫俱乐部

- PEACH GARDEN GOLF CLUB --28 KM
(45 MINUTES DRIVE)

佛山市南海区南国桃园高尔夫球会

- EMERALD LAKES --53 KM
(60 MINUTES DRIVE)

佛山市三水区云东海高尔夫球会



03

SOFITEL FOSHAN INTRODUCTION 酒店介绍

ACCOMMODATION, RESTAURANTS AND BARS, SO FIT , SO SPA,
MEETINGS 住宿 , 餐饮 , 健身 , 会议



SOFITEL FOSHAN

佛山罗浮宫索菲特酒店

The Sofitel Foshan is located in China Leading Furniture City – Lecong in Shunde and connect to Louvre International Exhibition Furniture Center. It is the first property of Accor under its flagship Sofitel Hotels & Resorts brand in Foshan, Guangdong Province. The Sofitel Foshan will open in 2017 featuring an amazing interior design, state of the art furniture, and well blended with French and Cantonese "Art de Vivre" in Foshan.

佛山罗浮宫索菲特酒店位于中国家具商贸之都----顺德乐从，与罗浮宫国际家具博览中心为伴，是雅高酒店集团在佛山市的第一家索菲特酒店。预计2017年开幕的佛山罗浮宫索菲特酒店致力于提供奢华精致的住宿体验，融合法式及粤式生活艺术“art de vivre”。



SOFITEL FOSHAN

佛山罗浮宫索菲特酒店

- 325 rooms and suites
- Club Millésime
- Meetings and Conference facilities
- 3 Restaurants and 2 Bars
- So SPA and 24 Hours SoFIT Fitness Center
- Panoramic Indoor Swimming Pool
- Laundry Service
- Limousine Service
- 325间客房和套房
- 索菲特会所
- 会议宴会设施
- 3个餐厅和2个酒吧
- So SPA水疗和24小时的So FIT健身中心
- 室内全景游泳池
- 洗熨服务
- 豪华轿车接送服务



ACCOMMODATIONS

酒店客房

325 stunning decorated rooms and suites with four stylish design rooms, Sofitel MyBed, rainshower, Lanvin and Hermes bathroom amenities, complimentary WiFi/ broadband internet.

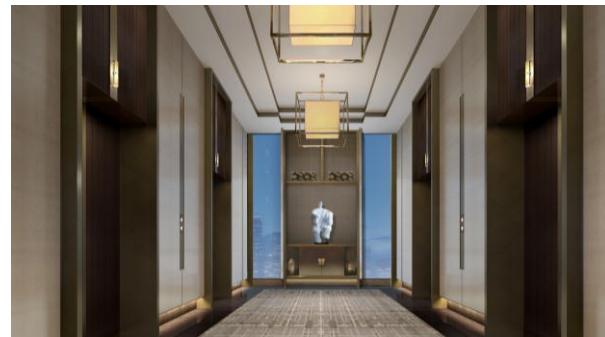
325 间不同装修风格的精美客房和套房，索菲特独有的豪华舒适大床“MY BED”、浴室配置热带雨林豪华卫浴设施，法国品牌浪凡及爱马仕洗浴用品，还有免费的无线及宽带高速网络。



RESTAURANTS AND BARS

餐厅和酒吧

- Le Chinois 乐轩华
- Kwee Zeen 锦厨
- La Luce意大利餐厅
- Sky bar 天空酒吧
- The Link bar 澜吧



SPA – FITNESS – SWIMMING POOL

水疗-健身-游泳池

Blending the best of local tradition and French beauty expertise to deliver the maximum benefit to the health of the skin, body and soul. French beauty treatments are performed with L'Occitane, bringing the French flair for rejuvenation and beauty care.

法国专业美容与中国传统相结合，致力让您的皮肤及身心达到和谐、健康。护理产品选择法国的欧舒丹系列。我们的每个护理都让您体验法国的优雅、专业及极致。享受纯植物手工护理，让身心放纵及升华。

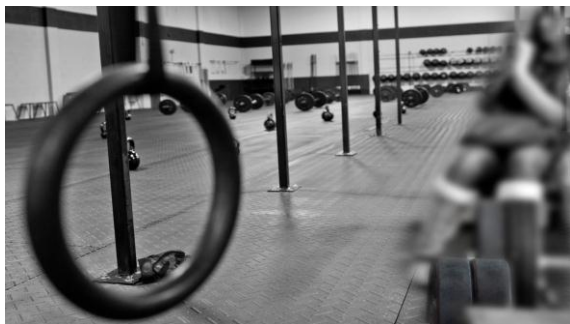


SPA – FITNESS – SWIMMING POOL

水疗-健身-游泳池

The latest concept is on display in the SoFit 24-hour fitness center, including cardio, crossfit, strength and yoga equipment with LifeFitness® and a panoramic indoor pool.

最新科技设备设施的24小时健身康体中心So Fit配备LifeFitness®运动器材，室内全景游泳池。



MEETINGS AND CELEBRATIONS

会议及活动

Spectacular meeting and convention facilities.
Total area of 1,000 sq m pillar less grand ballroom and spacious ballroom foyer, 10 meeting rooms, latest A/V technology, full connectivity and innovative food and beverage offer.

拥有近1,000平方米的无柱宴会厅，及10间多功能会议室。完善的现代化宴会，会议设备设施及创新的美食餐饮服务。



CONTACT US 联系我们

DIRECTOR OF SALES AND MARKETING 市场销售总监

Henry Banson : henry.banson@sofitel-foshan.com



Louvre International Furniture Exhibition Center,
Hebin Road South, Lecong, Shunde District, Foshan,
528315, Guangdong Province, P.R. China

中国广东省佛山市顺德区乐从镇河滨南路
罗浮宫国际家具博览中心 邮编：528315

TEL 电话: +86 (0) 757 2836 6736

FAX 传真: +86 (0) 757 2836 6760

Toll Free 预订热线 400 813 3388

